



THE SEVENTEENTH ANNUAL RED LOBDELL MEMORIAL REGATTA

Saturday, July 28, 2018 – first start 1030 Hrs.

SAILING INSTRUCTIONS

1 Organizing Authority

- 1.1 This regatta is organized by the Stonington Harbor Yacht Club.

2 Eligibility

- 2.1 This regatta is open to all PHRF rated boats 20 ft. loa or longer; all NEMA rated boats and one design classes with two or more entries that appear timely at the starting line.

3 Entry

- 3.1 Entries, including payment and acceptance of Liability Waiver may be done on line by visiting www.YachtScoring.com no later than July 26, 2018, or by contacting the Stonington Harbor Yacht Club 860-535-0112. A valid PHRF-ECSA or NEMA (multi-hull) rating certificate is required.
Competitors less than 18 years old must submit a signed parental consent form addressed to the Red Lobdell Regatta Chair, SHYC, 32 Water Street, 9 Stonington Commons, Stonington CT 06378 (form available at www.SHYC.us under sailing).
- 3.2 The Entry Fee is \$35 for all boats over 20' loa. For 20' and under the fee is \$15.

4 Classes

- 4.1 Classes will include:
 - Class 1: PHRF rated boats 20 ft. loa or longer, spinnakers permitted.
 - Class 2: PHRF rated boats 20 ft. loa or longer, cruising canvas only, no spinnakers of any type
 - Class 3: NEMA rated multi-hull boats
 - Class 4: J-24's, spinnakers permitted but, if less than three J-24's enter, J-24's will sail as part of class 1. Check scratch sheet for entries.
 - Class 5: Watch Hill 15s
 - Class 6: Shields
 - Class 7: Lasers
 - Class 8: Ideal 18s
 - Class 9 and up: One design boats with three or more entrants of the same class having filed entry documents and checked in with the Race Committee (RC) at the starting line. Each compliant class will be assigned a separate class number.
There is no limit to the number of classes that can be so entered but the RC will review and qualify each class.
- 4.2 Classes 1 and 2 races are ECSA points races.
- 4.3 The RC will make the final class determination. Assigned classes will be shown on the Scratch Sheet available after 1200 hrs. July 27 and from the Committee boat until 1010 hrs. on race day.

5 Rules

- 5.1 This regatta will be governed by *The Racing Rules of Sailing 2017-2020* and the prescriptions of The United States Sailing Association (RRS) as modified by these Sailing Instructions (SI's).
- 5.2 Rules 44.1 and 44.2 are changed to a penalty of one turn.
- 5.3 In the event of a conflict between the NOR and these SI's, the SI's will govern.
- 5.4 Sail numbers will be displayed on all boats.

- 5.5 All boats will carry VHF radios and monitor VHF 79.
- 5.6 **Classes 1 to 4** will check in with the Committee boat between 1000 and 1025 hrs using VHF 79 or by sailing under the Committee boat's stern and announcing her intention to race. **Classes 5 and 6** may check in at their course area until 1125 hrs. **Classes 7** and up may check in inside the breakwater until 1320.
- 5.7 Any boat abandoning the race should immediately notify the RC on VHF 79.
- 5.8 Engines must be turned off at least 5 minutes before the start of a boat's class.
- 5.9 If it becomes necessary to change these SI's, such changes will be announced over VHF 79 prior to a class's start.

6 Courses

- 6.1 The RC will establish 3 courses for this regatta in three different locations:
- Race Circle 1** will be for **classes 1 thru 4**, established in waters around Fishers Island Sound, use Government Marks for course definition and be 20 to 25 nm in length. The finish for all classes in **Circle 1** will be between gong "3" (Green Gong 0.35 nm SW of the Horn on Middle Ground Breakwater, the outer Stonington Breakwater and a race committee boat flying a blue pennant.
 - Race Circle 2** will be for **classes 5 and 6** south of the outer breakwater and will use inflatable yellow and orange tetrahedrons for course definition. There will be multiple windward-leeward races.
 - Race Circle 3** will be for **classes 7 up** (Lasers, Ideal 18's and one design classes 19' and under) will be **inside the outer breakwater** and will use inflatable yellow and orange tetrahedrons for course definition. There will be multiple windward-leeward races.
- 6.2 The course for **Race Circle 1** will be identified before the start on the Committee Boat course board mounted on top of the boat's cabin. Letter codes for each possible Government Mark used for **Classes 1,2,3 and 4** follow:

<u>Assigned Letter</u>	<u>Nav.Chart Designation</u>	<u>Mark Location</u>
I/M		Inflatable Mark
A	G"9"	Flashing Green Gong at Cerberus Shoal
N	RG"SP"	Red and Green Nun 0.15 nm south of Stonington Point
G	G"3"	Green Gong 0.35 nm SW of the Horn on Middle Ground Breakwater, the outer Stonington Breakwater
J	RW "L"	Mo(A) whistle Lord's Passage. (Boats must pass between Can "7" and N "2L" in Lord's Passage.)"
B	R"6"	Flashing red bell at Napatree Point Ledge
Y	N"16"	Red Nun at southeast end of Eel Grass Ground
R	R"20"	Red Bell south of Ram Island Reef
E	"Fl 4 Sec"	Seaflower Reef 1 nm south of Mumford Cove
M	C"1"	Green can at mouth of Mystic River
L	RB "DIR"	Red and black can at Intrepid Rock
C	RW "SE"	Red & white Whistle 0.1 nm west of Silver Eel Cove, Fishers Is.
F	R"4"	Red flasher and bell 1 nm south of Bartlet Reef
K	R"2"	Red Nun SW Race Pt Fishers Island. Note: Boats may not pass between red bell # 2 and North Hill on Fishers Island."

- 6.3 The letters assigned to define the Race Circle 1 courses will be displayed on the course board in order of rounding. Letters P and S indicate the preceding mark(s) are to be left to Port or Starboard. S/F indicates the start and finish lines which will be the same except for Race Circle 1 or if the course is shortened. Examples: R N P S/F indicates marks R and N to be left to port and then to finish. R F P Y S S/F indicates marks R and F to be left to port, mark Y to starboard, then to finish.
- 6.4 The courses for Race Circle 2 for **classes 5 and 6** will be displayed on the Committee Boat course board as follows:
- W P S/F Windward mark left to port then to finish
- W L P S/F Windward mark left to port then leeward mark left to port then to finish
- W R L P S/F Windward, reaching and leeward marks left to port, then to finish.
- If the course is to be taken twice or three times around, the number two or three will appear as follows: W L P 2 S/F. A course to be taken three times around could show W R L P 3 S/F.
- RC may choose either a race with multiple roundings or several races once around. Watch your Start signals as well as the course board.
- 6.5 The courses for Race Circle 3 for **classes 7 and above** are inflated tetrahedrons, yellow for windward and leeward marks, orange for a reaching mark. Start and Finish lines are described in section 7, below.

7 The Start

- 7.1 The Starting/Finish Line for the **Race Circle 1** will be in Fishers Island Sound. It will be between an orange flag on the RC Committee Boat and a small orange buoy, in all cases racers leaving the buoy to port. The RC boat will be anchored south of Stonington Harbor and Wamphassuc Point. If any race is shortened, it will be done in accordance with RRS Rule 32. Be aware that the RC boat that starts any race may not be the same boat that is at the finish line. Any official RC boat will display a blue or yellow RC flag. The Finish Line will be between a blue or orange flag on the RC boat and a small orange buoy, racers always leaving the buoy to port.
- 7.2 The Starting Line **Race Circle 2** will be south of the outer breakwater. It will be between an orange flag on the RC boat and a small orange buoy, racers always leaving the buoy to port. The Finish Line will be between a blue flag on the RC boat and a small orange buoy, racers always leaving the buoy to port.
- 7.3 The Starting Line **Race Circle 3** will be south of the inner breakwater. It will be between an orange flag on the RC boat and a small orange buoy, racers always leaving the buoy to port. The Finish Line will be between a blue flag on the RC boat and a small orange buoy, racers always leaving the buoy to port.
- 7.4 The RC may choose to start two or more classes together rather than individually. During the Starting sequences, be aware of the class flag(s) displayed for each sequence.
- 7.5 The Class Flag for each class will be the numerical pennant for the class number.
- 7.6 The Scratch Sheet will assign numbers for each class and assign each boat to the appropriate class. See 4.1 above.
- 7.7 **Classes 1, 2, 3 and 4** will be started using the 5 minute sequence of RRS Rule 26.

<u>Time Until Start</u>	<u>Signal</u>	<u>Flag</u>	<u>Sound</u>
5 minutes	Warning	Class Flag Up	1 Horn
4 minutes	Preparatory	'P' Flag Up	1 Horn
1 Minute	One Minute	'P' Flag Down	1 Long Horn
0 Minutes	Start	Class Flag Down	1 Horn

- 7.8 For **Classes 1, 2, 3 and 4** the warning signal for each succeeding class shall be made 5 minutes after the starting signal of the preceding class.
- 7.9 **Classes 5 and above** will be started using the 3 minute sequence as follows;
- | | | | |
|-----------|-------------|-----------------|-------------|
| 3 Minutes | Warning | Class Flag Up | 1 Horn |
| 2 Minutes | Preparatory | 'P'Flag Up | 1 Horn |
| 1 Minute | One Minute | 'P''Flag Down | 1 Long Horn |
| 0 Minutes | Start | Class Flag Down | 1 Horn. |
- 7.10 Before the Starting Signal, any postponement will be indicated by the display of Pennant "AP" with two horn sounds.
- 7.11 Individual recalls for being OCS will be indicated by display of Flag "X" and one horn regardless of the number of boats being recalled. The RC will attempt to hail boats OCS on VHF 79. Boats so recalled and failing to return and restart will be assessed a 20 minute penalty **for Classes 1 through 4** and drop 1 place in scoring for **Classes 5 and above**. RRS 29.1 is modified accordingly.
- 7.12 General Recalls will be signaled in accordance with RRS Rule 29.2
- 7.13 First warning for **Classes 1, 2, 3 and 4** will be at approximately 1030 hrs. Classes may be started in numerical sequence or some classes may be combined for a joint start. Watch the starting sequence signals.
- 7.14 First warning for **Classes 5 and 6** will be at approximately 1130 hrs. (classes may be joined for a combined start.)
- 7.15 First warning for **Class 7** up (Lasers, Ideal 18's and one design classes 19' LOA and under) will be 1330
- 7.15 There will be no rolling starts. Time between starts for different classes may vary.

8 Scoring

- 8.1 PHRF rated boats competing in **Classes 1, 2 and 4** will be scored time on time by class. NEMA rated boats (**Class 3**) will be scored time on time. One design boats sailing as a class (**Class 5 and above**) will be scored Low Point, RRS Appendix A.
- 8.2 Any boat not finishing its race(s) by 1700 hrs. will be scored DNF. This changes RRS Rule 35.
- 8.3 The PHRF Spinnaker Class race (**Class 1**) and PHRF Cruising Canvas race (**Class 2**) are ECSA points races.

9 Protests

- 9.1 A boat that has taken a 360 degree penalty turn under RRS Rule 44.2, as modified above Will notify the RC on VHF 79 immediately after the race describing the incident.
- 9.2 A boat intending to file a protest will so notify the RC on VHF 79 immediately upon conclusion of its race and, within one hour of docking, deliver to the RC a written protest detailing the incident, the boats involved and the RRS rule violated. The RC will schedule a hearing by the Protest Committee as soon as possible after receiving the written protest. Any race in which a protest occurs will not be scored until the protest is decided.

10 Liability

- 10.1 Each boat's Master must sign the Liability waiver accompanying the Entry form as noted in 3.1, above and each crew member must sign, or have signed within the year, the crew liability form . These forms are available at www.shyc.us/racing or online at www.YachtScoring.com

11 Awards

- 11.1 First, second and third place awards for each class will be given at the Shore Party following the regatta. The Red Lobdell Memorial Trophies will be awarded to the winners of the PHRF Spinnaker, PHRF Cruising Canvas and NEMA classes.

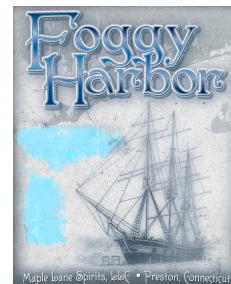
12 Shore Party

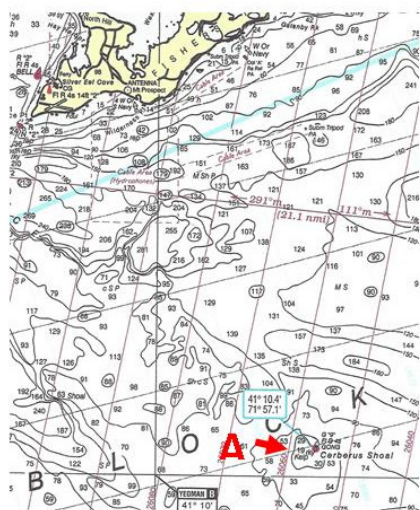
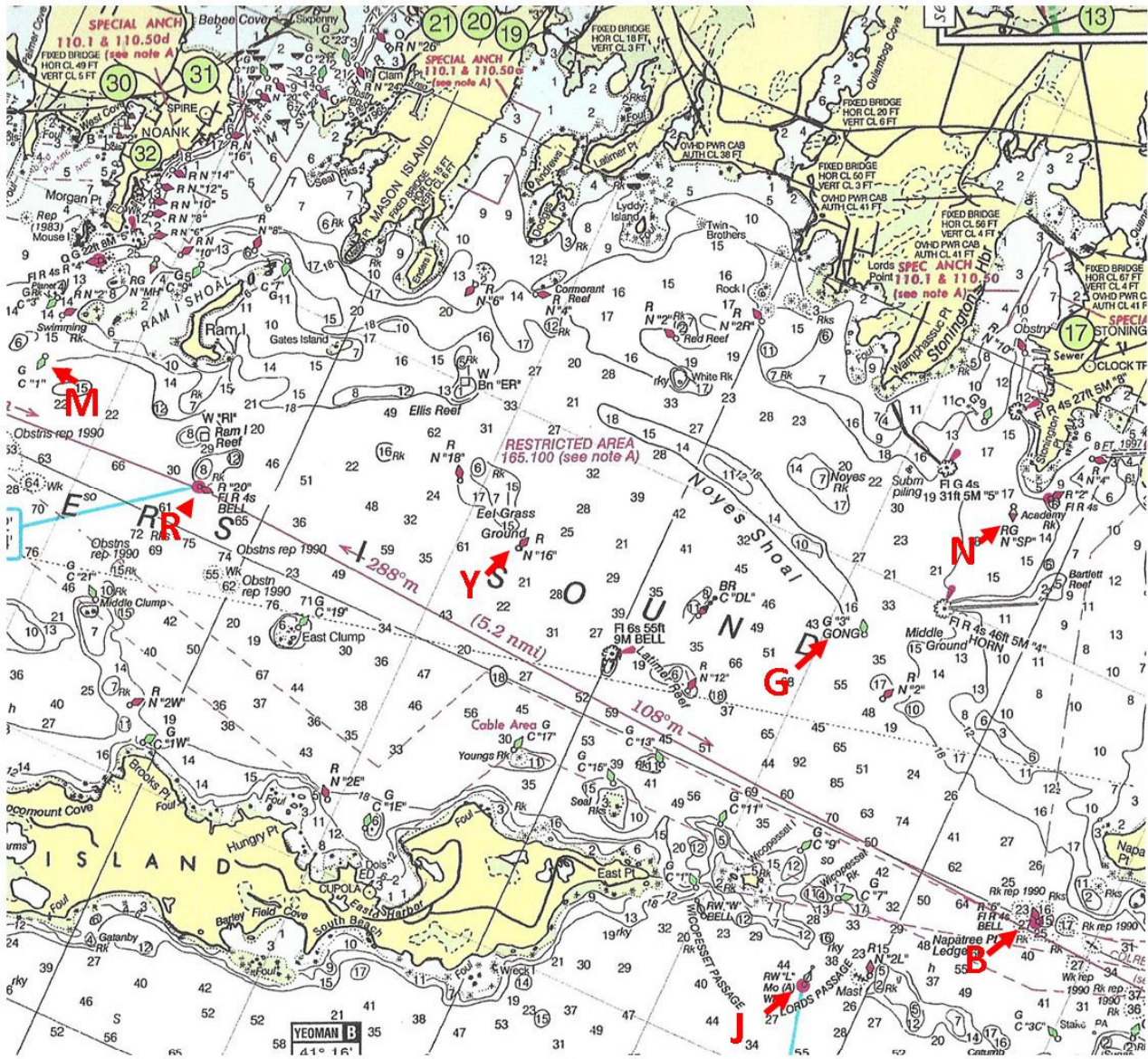
- 12.1 A Shore Party including a pig roast will be held at SHYC following the regatta See NOR Section 9 for details. Part tickets are \$30 per person and include one free drink
- 12.2 Very limited overnight dockage is available at SHYC.. Contact the SHYC Dockmaster at waterfront@shyc.us for reservations or contact Dodson's Boatyard on VHF 78 or 860-535-1507..

13 Additional Information

- 13.1 See the SHYC website www.shyc.us/racing/calendar for additional information or call RC Chair Kevin Bowdler (860-405-5434) or e message kevinjbowdler@gmail.com.

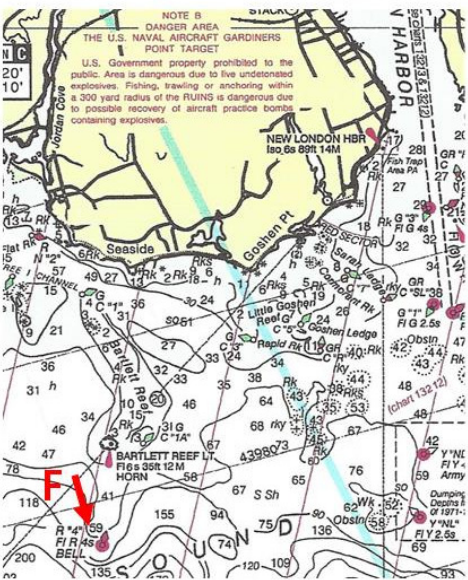
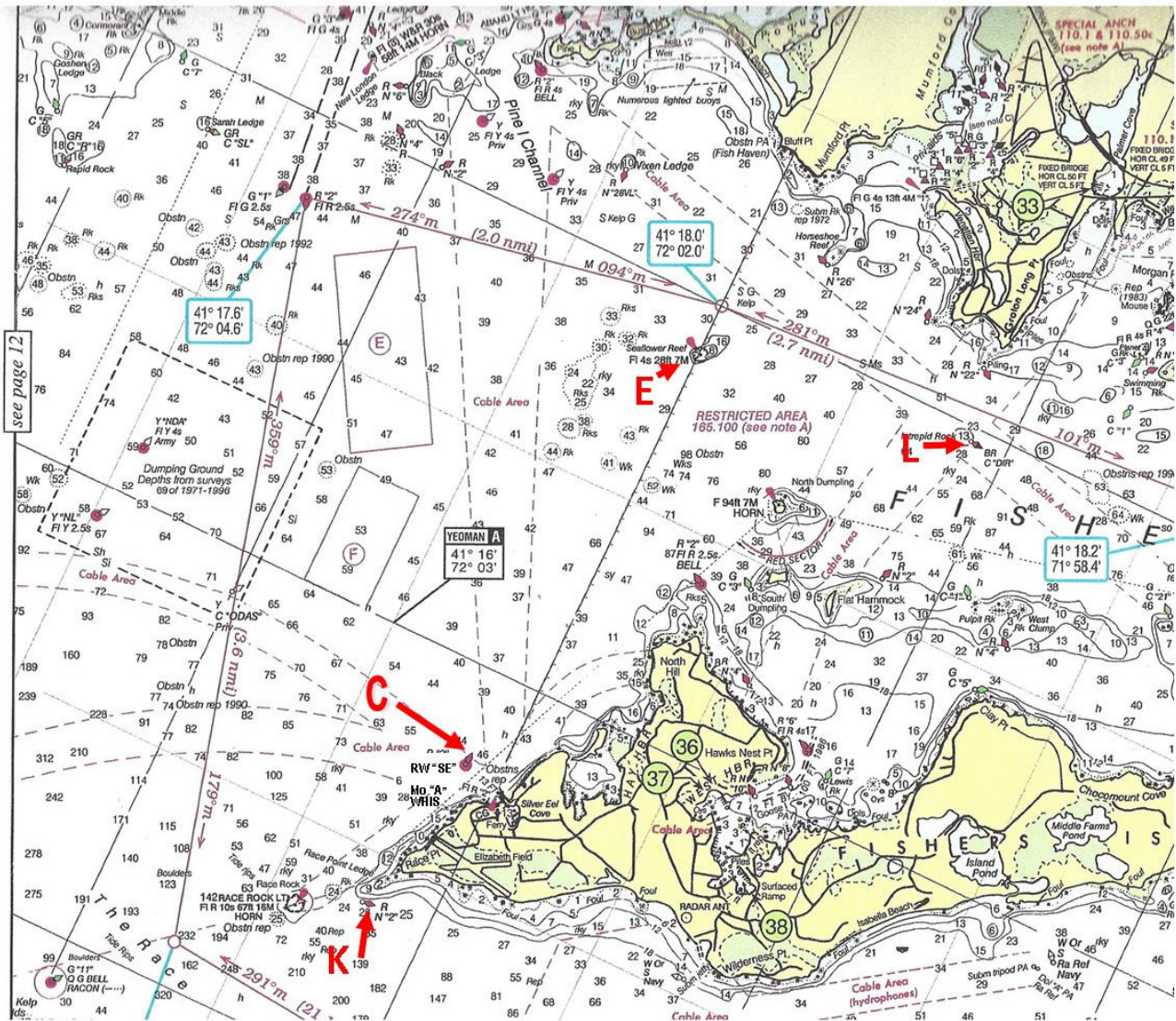
Thank you to our generous sponsors:





Assigned Letter **Nav Chart Designation** **Mark Location**

- A** G"9" Flashing Green Gong at Cerberus Shoal
- N** RG"SP" Red and Green Nun 0.15 nm south of Stonington Point
- G** G"3" Green Gong 0.35 nm SW of the Horn on Middle Ground Breakwater, the outer Stonington Breakwater
- J** RW"L" Mo(A) whistle Lord's Passage. (Boats must pass between Can "7" and N "2L" in Lord's Passage.)
- B** R"6" Flashing red bell at Napatree Point Ledge
- Y** N"16" Red Nun at southeast end of Eel Grass Ground
- R** R"20" Red Bell south of Ram Island Reef
- M** C"1" Green can at mouth of Mystic River



Assigned Letter **Nav Chart Designation** **Mark Location**

- E** "FI 4 Sec" Seaflower Reef 1 nm south of Mumford Cove
- L** RB "DIR" Red and black can at Intrepid Rock
- F** R"4" Red flasher and bell 1 nm south of Bartlett Reef
- C** RW "SE" Red & white whistle 0.1 nm west of Silver Eel Cove, Fishers Is.
- K** R"2" Red Nun SW Race Pt Fishers Island. "Note: Boats may not pass between red bell # 2 and North Hill on Fishers Island."